

## Technical Specifications

<b>Power supply</b>	10 ... 28VDC
<b>Power consumption</b>	typ. 0.23W, max. 0.3W
<b>Hörmann HCP Interface</b>	Compatible with Hörmann Communication Protocol 1 and 2 (HCP)  The device recognizes automatically which garage door operator is connected and which HCP version is used.
<b>Loxone Air</b>	868MHz (SRD Band Europe), 4 channels, max. 15.1mW e.r.p. 915MHz (ISM Band Region 2), 10 channels, max. 13.2mW internal antenna
<b>Ambient Temperature</b>	-20 ... 65°C / -4 ... 149°F
<b>Humidity</b>	max. 95% r.H. (non condensing)
<b>Degree of protection</b>	IP20

## HCP Cable

<b>Wire cross-section</b>	0.2mm <sup>2</sup> / AWG26
<b>Temperature resistance</b>	80°C / 176°F
<b>Length</b>	100mm / 3.94"
<b>Connector</b>	Modular 6P6C (RJ-12)



For more information about this product, visit [loxone.com/help/hoermann-air](https://loxone.com/help/hoermann-air)

V110124

**Loxone Electronics GmbH**  
Smart Home 1  
4154 Kollerschlag  
Austria

**Loxone UK**  
The Forum  
Station Road  
Theale, RG7 4RA  
United Kingdom



For additional information, declaration of conformity, visit [www.loxone.com/datasheets](https://www.loxone.com/datasheets)

# Hörmann Air

Need Help?  
[loxone.com/support](https://loxone.com/support)



Part No.: 100552

## About the Product

Loxone Hörmann Air is a compact interface module for integrating Hörmann garage door operators.

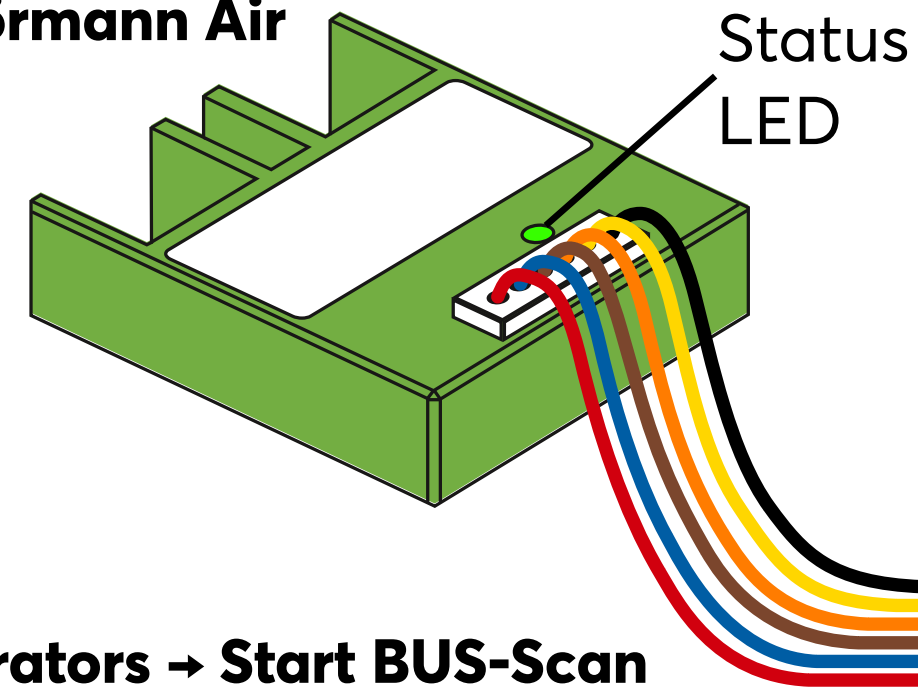
## Compatible Hörmann operators

Operator	Protocol, compatible from Hörmann Softwareindex / Date
SupraMatic E/P 4	HCP2, from B4 / 03-2021
ProMatic 4	HCP2, from B3 / 03-2021
SupraMatic 3	HCP1, from Ci / 07-2013
SupraMatic HT3	HCP1, from B0 / 07-2014
Liftronic 700-2	HCP2, from B0 / 03-2021
Liftronic 800-2	HCP2, from B0 / 03-2021
RollMatic 2	HCP2, from B0 / 04-2022
LineaMatic / P / H	HCP1, from E / 07-2013
LineaMatic 2 / P 2 / H 2	HCP1, from A / 03-2017
RotaMatic	HCP1, from G / 08-2013
RotaMatic 2 / P 2 / PL 2	HCP1, from A / 03-2017
VersaMatic	HCP1, from A / 07-2016
Control 545/560 with WA/ITO 500	HCP2, from B1 / 06-2021
Control 560 with STA 500 FU	HCP2, from B1 / 06-2022

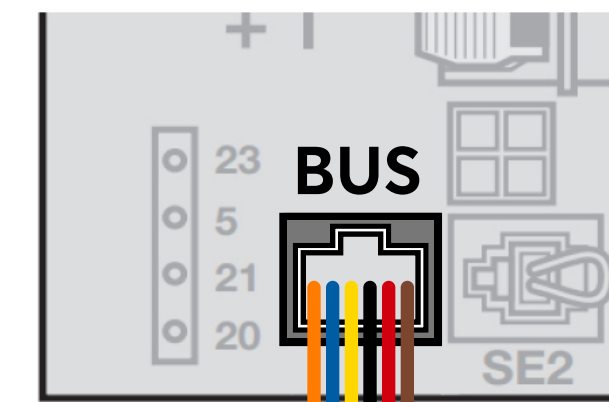
**When using an operator with HCP2 interface, first activate the BUS-Scan on the operator.**

When using an operator with HCP1 interface, the device is directly in pairing mode.

## Hörmann Air



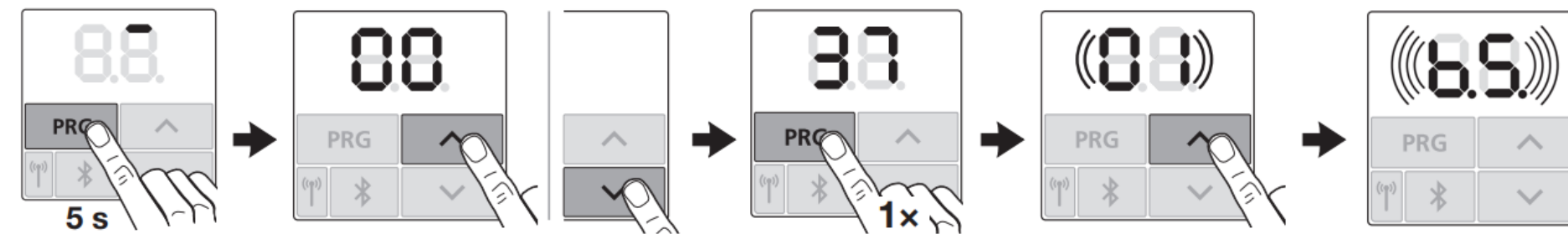
## Hörmann operator



## HCP2 operators → Start BUS-Scan

### SupraMatic 4:

Enter programming Menu 37, Parameter 01 activates BUS-Scan:

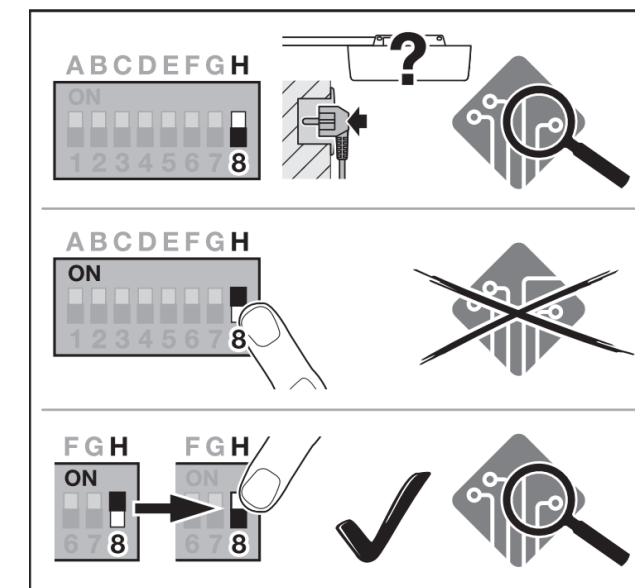


You can exit the menu bei selecting parameter 00 and press PRG, or wait for 60 seconds.

After BUS-Scan was activated, Hörmann Air is supplied with power from the operator, and can be paired.

### ProMatic 4:

BUS-Scan at factory Power-On or set switch 8 to On and Off again.



### Liftronic:

BUS-Scan at factory Power-On or set switch 5 to On and Off again.

