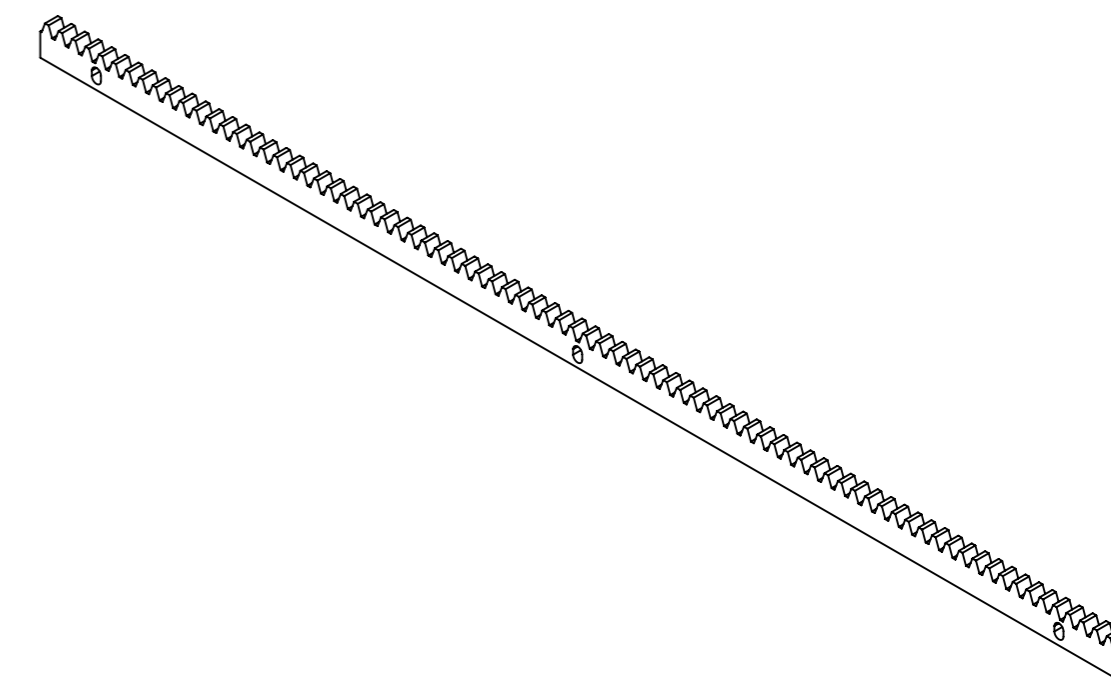
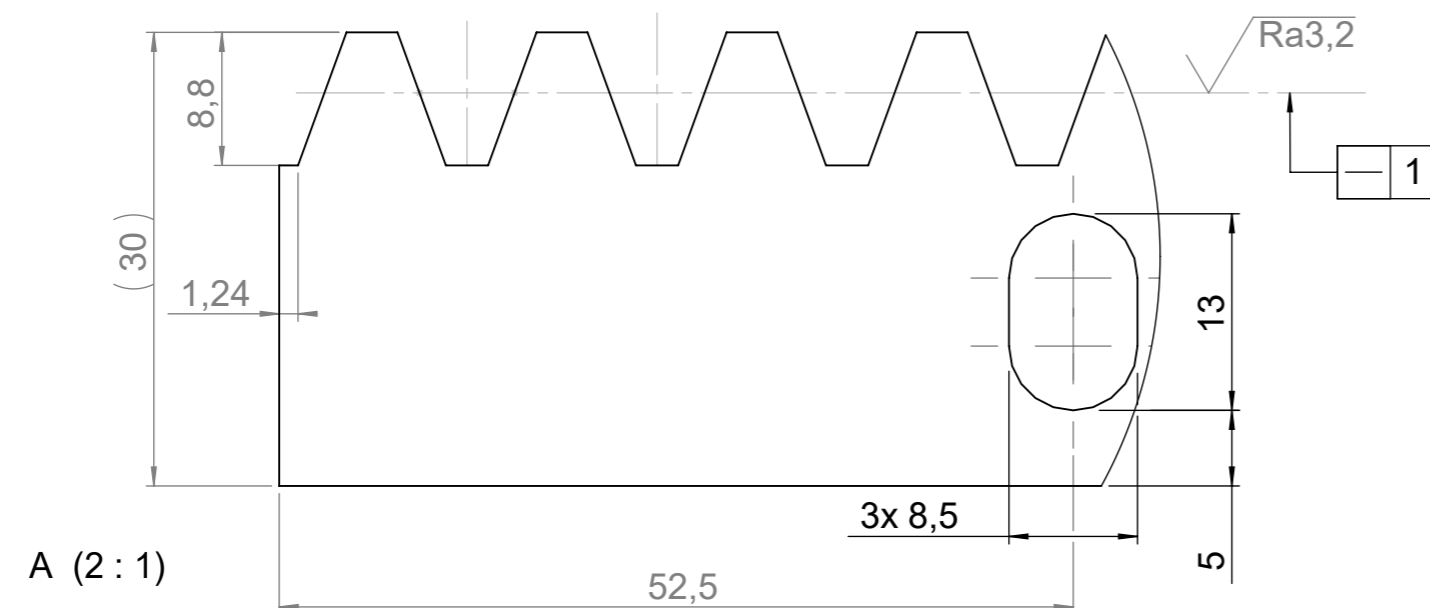
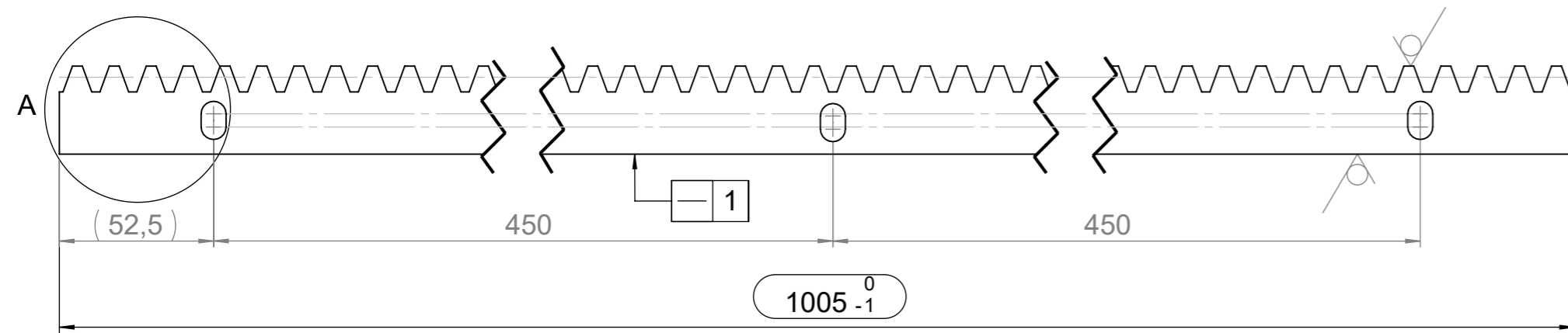


**Inspection:**  
The parts have to be inspected during manufacturing according to the quality control plan released by Sommer. Modifications on the manufacturing process and/or the quality control plan must generally be inspected by Sommer.



Material  
Flat steel 30 x12 e.g.  
Flachstahl 30 x12 z.B.  
DIN 1017-S235JR  
Surface treatment  
ISO 2081-Fe/Zn12/A blue or  
Coating DIN EN ISO 1461-tZn o

Dimensions without individual  
tolerance indications:  
ISO 2768-mK

Do not scale-if in doubt ask!

Issue	Panel	Description	Date	Name
Drawn	2013.01.22	Roewekamp		
Checked	2013.02.14	Roewekamp		
Appr.	2013.02.14	Roewekamp		

Scale  
1:2  
(2:1)

Copyright and property of  
Sommer Antriebs- und Funktechnik  
GmbH.  
All rights reserved. Referred  
to protection notice ISO 16016.

Modifications		Submission Level: <b>B</b>	
Date	Name	Title	
		<b>Rack 1 m Steel + Mounting Parts</b>	
		<b>Zahnstange 1 m Stahl + Montagematerial</b>	
		<b>STA m=4 80Z</b>	

Article number  
**5825V001**

Replacement for: Replaced by:

Size  
**A2**

Sheet  
1  
1 Sh